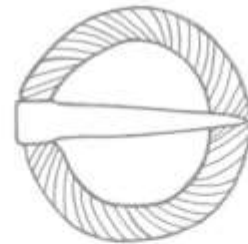
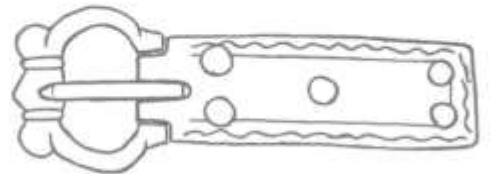
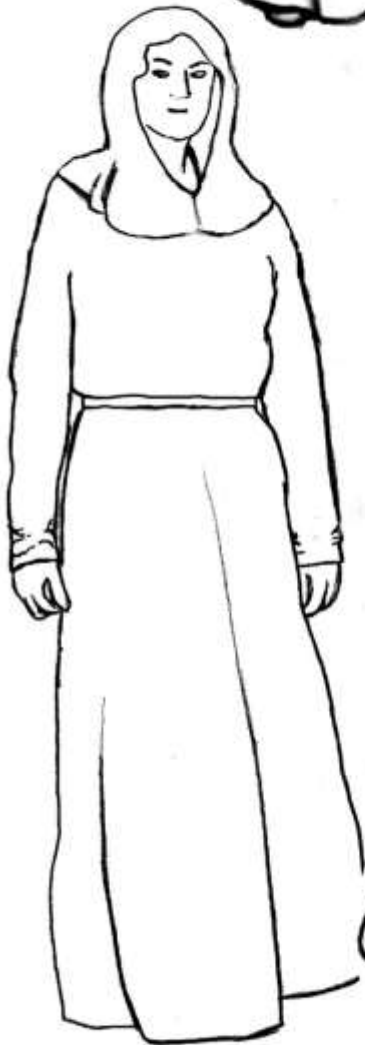


Regia Anglorum
1180-1215AD

Barbette
& Open Veil



Magyar
Sleeve

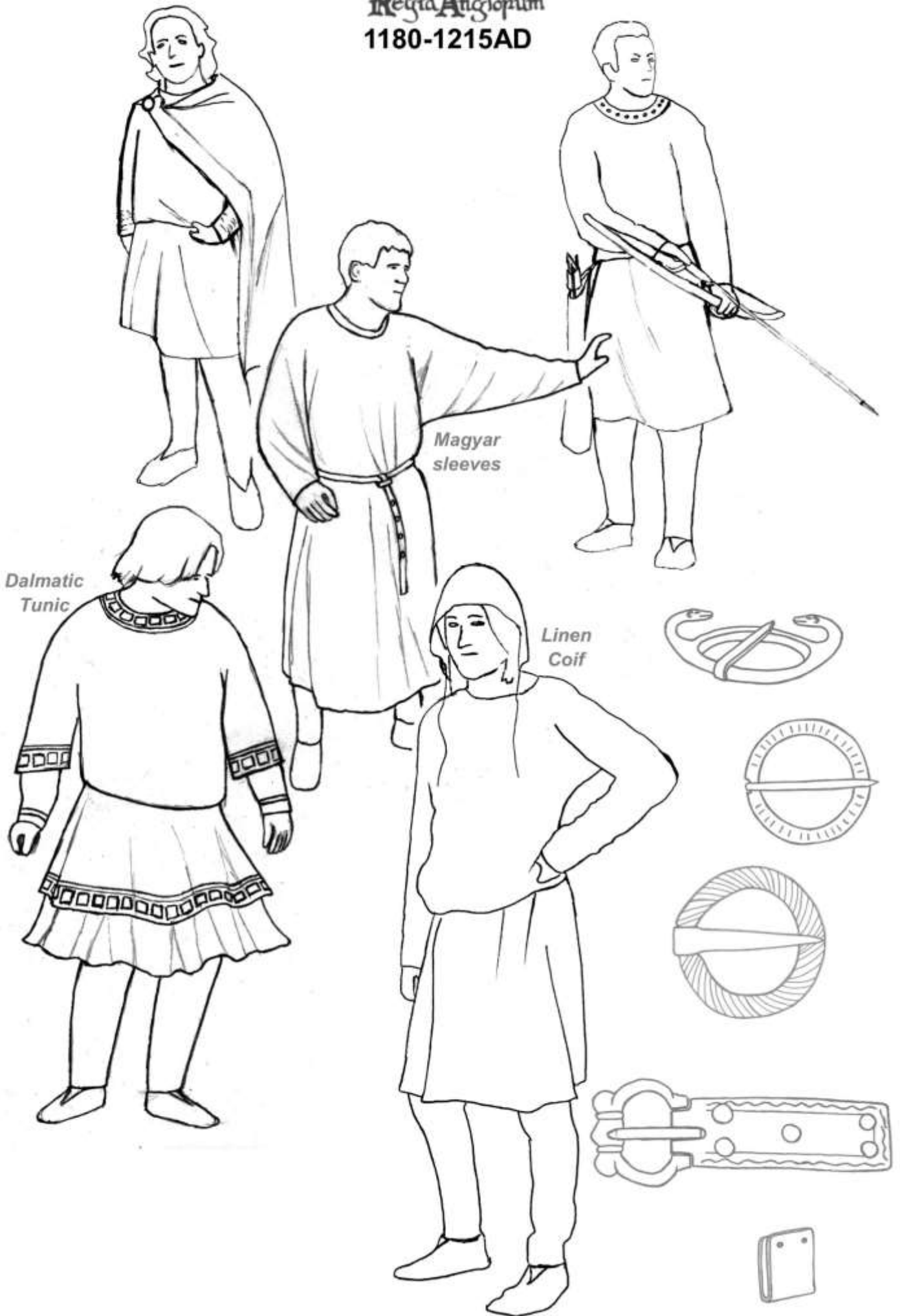


Women's Clothing – Angevin (1180–1215AD)

	Encouraged (Very Common)	Optional (Less Common)	Allowable (Interpreted or Rare)	Unacceptable
Head	Veil or wimple over a cap, headscarf or wide headband and that shows the throat Open faced veils	Decorated headband worn under veil or wimple	Headscarves [POOR] Hoods [POOR] Veils with long tails [RICH] Straw hats over veil or wimple [POOR] Barbettes [RICH] [R] <i>Metal fillet over veil [RICH]</i>	Bareheaded women / teenage girls Obviously dyed hair or makeup Tablet or inkle braid headbands Any tie or cloth fillet worn over the head covering Bead necklace Enclosed throat wimples
Under Shift	Shift made from linen, ankle length with a bias edged keyhole or oval neck hole Natural Tight sleeves with rucking	Dyed a light colour or bleached Embroidery [RICH] Annular brooch at throat	Different colour square or round facing Dyed a strong colour Short visible shift, just above the ankle [POOR]	Other decoration Visible shift above mid-calf Pleated underdress
Dress	Woollen ankle length dress with oval or keyhole style neck hole, long sleeved tight to wrist Embroidery [RICH] Magyar sleeves Full skirts to dresses, with some tailoring to body	Looser fitting sleeves Decorated with: - Braid - Tablet weave (1 to 3 colours) - Brocaded tablet weave [RICH] - Embroidery [RICH] - Silk ribbons [RICH]	Overdress to mid shin (must be worn with ankle length shift) [POOR] <i>Dress to mid forearm and mid shin with no visible under shift [POOR] [R]</i> Lacing or cinching at sides Rucked sleeves Dress made from linen <i>'Decorative' brooch [RICH]</i>	Dress above mid-shin Different coloured gores or sleeves Other decoration including inkle braid Hangerocks or oval brooches
Belt & Bags	No belts or girdles Short braided or woven textile girdle	Cloth sash in same material as dress or mantle Leather or cloth satchels or sacks Long braided or woven textile girdle or leather belt with buckle with dangling end to mid shin <i>Drawstring pouch</i>	Small drawstring or tagged pouches Forged snips in sheath <i>Small knife in sheath</i>	Inkle braid girdle Box pouch Modern snips or scissors
Cloak	Cloaks clasped at the chest with disc brooch	Semi-circular cope style cloaks with a tie fastening across chest [RICH]	Cloak pinned with pin or penannular Mantles	Trefoil brooches Equal armed brooches Backtrains Different coloured lining
Legs	Bare legs		Trousers or hose if hidden	
Shoes	Low shoes or ankle boots (to bottom of ankle bone) Bare feet		Nålebound socks Ankle boots (up to top of ankle bone) Taller boots Foot wraps or sock bags	Tall boots (higher than top of ankle bone) 8 th C. or earlier patterns

[R] = Restricted; [RICH] = Thegn / Knight / Lord ; [POOR] = Bonded / Serf / Slave

Regia Anglorum
1180-1215AD



Men's Clothing – Angevin (1180-1215 AD)

	Encouraged (Very Common)	Optional (Less Common)	Allowable (Interpreted or Rare)	Unacceptable
Head	Plain linen coifs	Bare headedness Woollen hoods Straw hats (often over a linen coif)	Skull caps Linen or leather hoods	Cloth "Phrygian caps" Obviously dyed hair Bead necklaces Frisian caps Nålebound caps [R] Fur caps
Under Shirt	Natural or bleached shirt made from linen with a bias edged keyhole or oval neck hole Side split	Shirt as outer garment <i>with hem ending up to 2" above the knee</i> Shirt made from wool Dyed a light colour Shirts with skirt gores Front split	Different colour round or square facing Dyed a strong colour Embroidery [RICH] Long robe [RICH]	Shirts visible under tunic Other decoration
Tunic	Tunics made of wool Rucked up to knee length with tight sleeves Tunics with faced oval keyhole style neck hole Keyhole or oval neck hole with bias edging Neck holes closed with ties Split front tunics	Tunics made of linen Tunics with faced square keyhole style neck hole Decorated with: - Decorative seams - Braid - Tablet weave (1 to 3 colours) - Brocaded tablet weave [RICH] - Embroidery [RICH] - Silk ribbons [RICH] Magyar sleeves <i>Rucked tunics with hems that end up to 2" above the knee</i>	Shorter tunics un-rucked to knee length Tight sleeves with rucking Tunic closed with authentic hook & eye Loose sleeves Long split front tunics (calf to ankle length) [RICH] Dalmatic tunic over long robe [RICH]	Side split Loose sleeves Different coloured gores or sleeves Shorter than 2" above knee level when unbelted Brooch worn at throat Decorated with: - Inkle braid - facing, braid or embroidery around the hem
Belt & Bags	Buckled leather belts or cloth ties hidden by tunic Small knife in sheath	Split end belts Visible leather belt or cloth tie Leather or cloth satchels or sacks <i>Drawstring pouch</i>	Drawstring or tagged pouches worn on belt <i>Long hanging belt (possibly with plates)</i> [RICH]	Inkle braid belt Box pouch
Cloak	Rectangular cloaks pinned at shoulder with disc brooch Hanging length from waist to knee	Pinned with metal or bone pin Cloak ribbons [RICH] Edged with different coloured facing Different coloured linings Circular style cloaks closed at throat	Cloaks pinned at chest Fur lining Pinned with penannular Hooded mantle [POOR][R]	Viking jackets Mantles Cloaks pinned at hip Leather or fur cloaks
Legs	Wool hose tight to legs without leg bindings Hose with integral feet Bare legs [POOR]	Braies (on their own)	Linen hose Tight leather hose worn with spurs [RICH] Wool trousers tight to legs with no leg bindings	Leg bindings Viking baggy trousers Loose legged trousers
Shoes	Low shoes or ankle boots (to bottom of ankle bone) Bare feet	Ankle boots (up to top of ankle bone) Mid-calf boots (pull on or spiral laced)	Slipper style shoes [RICH] Nålebound socks Foot wraps or sock bags	Other boot styles 10 th C. or earlier patterns

[R] = Restricted; [RICH] = Thegn / Knight / Lord ; [POOR] = Bonded / Serf / Slave

Regia Anglorum
1180-1215AD



* Faceplate helms must be worn with full sleeved hooded mail (or coif & surcoat), kite shield & period sword

Wargear – Angevin (1180-1215AD)

	Encouraged (Very Common)	Optional (Less Common)	Allowable (Interpreted or Rare)	Unacceptable
Helm	Flat top faceplate or enclosed helm [K] Conical or Domed helm – ‘single piece’ with or without nasal	Iron ‘hats’ with narrow brim worn over mail hood / linen coif Secret cervelliere Conical or domed helm – riveted or welded panels	Helms with aventails Hardened leather cap Helms without nasals Domed face plate helms [RICH]	Spectacle helms Boar crested helms Coppergate helms Sugar loaf helms Broad brimmed iron ‘hats’
Armour	Mail shirt with integral coif, side closing ventail and long sleeves (with integral mitts) [RICH] [K] Long sleeve front split or unsplit mail shirt to knees Leather jack, leather or cloth padded gambeson worn under mail 6 - 8mm alternating riveted & welded Loose surcoats over long sleeved & hooded mail (1 colour) [K]	Footed mailed leg protection [RICH] [K] Unfooted mailed leg protection [K] Leather jack or leather padded gambeson worn as armour 6 – 8mm riveted Loose surcoats over long sleeved mail with hood / coif (1 or 2 colours); striped designs (possibly with emblem)	Mail byrnies Short sleeved mail Chest square ventail Separate coifs (should be disguised) Side split mail shirt Butted / riveted links up to 10mm Tighter surcoat styles over long sleeved mail with hood / coif (1 or 2 colours) <i>Surcoats with halved or quartered designs</i> <i>Cloth padded gambeson worn as armour [R]</i> <i>Simple leather gloves</i>	Vandyked mail shirt Splinted arms or legs Lamellar / Scale Cuir Boilli / Plate armour Separate mail covered gloves
Shield	Flat top kite [RICH] [K] Heraldry [K] [R] Kite shield without boss Sewn on leather or rawhide edge Painted in a single colour	Kite / flat top kite shield with boss Nailed on leather or rawhide edge Painted in stripes or other repeated geometric design Painted in up to 3 colours	Heater shield [RICH] [K] Round shield [POOR] Painted in quartering or other geometric divisions Painted in 4 or more colours [R] Kite shield painted with zoomorphic design [RICH]	Parallel sided/tower shield Rectangular or oval shields Painted in other art style or design Lenticular shields Target shields
Spear	1-handed spear Angular shaped heads		<i>2-handed spear or winged spears with blade of 8” – 16” [after 1/1/2017]</i> Leaf shaped heads	Angon
Knife	Double or single edged fighting knives (not seaxes) in vertical sheath Wood handles	Bone handles	Worked antler handles Undecorated sheath Composite wood / bone / stone handles [RICH] Seax in vertical sheath	Un-sheathed knives Rondel & bollock daggers Unworked antler handles Wooden handles with bark
Sword	Disc pommels Long straight crossguards Swords on sword belts Composite wooden / leather plain scabbard	Tea cosy / Brazil nut pommels Long, curved crossguards	Boat pommels Swords on baldrics	Unscabbarded weapons C8th & C9th sword types Single edged swords Langseax Decorated scabbards
Other	Broadaxes (Dane axe) Lochaber axe Hand axes without beards <i>Axes hafted with wooden wedges</i>	Mace as a weapon [K] [RICH] Glaives Crescent bladed axes	Axes with beards [POOR] Leather axe loops Edge protector for axe War pick on long shaft Flanged Mace	Francisca Metal axe rings
Missile	Self-bow with arrows in quivers. Bodkin heads Javelins	Crossbows (locking nut)	Re-curve Self-bow Slings Crossbows (rising pin)	

[R] = Restricted; [K] = Knight ; [RICH] = Thegn / Lord ; [POOR] = Bonded / Serf / Slave